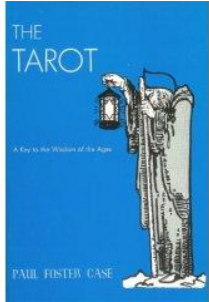


Netivah Study Guide



Taken from the book The Tarot by Paul Foster Case



Produced by Magdalene Circle (www.magdalene-circle.org) in Austin Texas.

Tarot Introduction

In the Sophian Tradition of Gnostic Christianity, the Tarot, especially the 22 Major Arcana, are viewed as a pictorial test book of the Ageless Wisdom that leads to enlightenment. They are not typically used for divination and if so used, no monetary compensation is expected or accepted. The Tarot is viewed as a tool to assist a seeker and/or an initiate on their path.

We, in the Tradition, use Paul Foster Case's book [The Tarot: A Key to the Wisdom of the Ages](#), as our basic text. His work aligns quite closely with the teachings of the Tradition though there are some differences which the initiate's mentor and/or teacher will discuss with her or him.

The initiate will note that although the basic subject of the study is the Tarot, several other topics will be introduced and dealt with. These include The Hebrew alphabet, (alefbet) Gematria, Kaballah and the Tree of Life.

An excellent method of study of the 22 Major Arcana is to select the card to be studied and examine it carefully. Look at the colors, the scene, the figures and the corresponding Hebrew letter. What do they bring to mind? How does this card relate to the cards before and after and the other cards you have studied? Meditate on the card and only then read the accompanying study sheet and what Case has said about the card. Don't take shortcuts.

There is one essential point which must be remembered while studying the Tarot. There is always more to learn. You can never learn everything the 22 cards have to offer. Accept the teachings and lessons given you and remember to come back at a later time for further instruction. Another point is how to review the cards in an orderly manner. Begin by looking at the Hebrew letter in the lower right-hand corner. Then consider the meaning of the title of the card. What does it mean to you? And then look at the number and consider what the number means to you before looking at the provided numerical meanings. After you have done that, look at the picture. Start at the upper right-hand corner and scan from right to left and top to bottom. While looking at the cards, the right-hand side is South; the opposite is North; the top is East and the bottom is West. Remember this as it is an important clue to the exact meaning of many Tarot symbols.

One of the best ways to receive this further knowledge is to meditate on one of the cards perhaps for one day or perhaps for many. Let it become part of you. Let it become so much of you that you can visualize during the day and study it without having the card physically present.

If you have the means and the desire, an additional aid to the understanding of the 22 cards is to purchase the cards in their uncolored form accompanied by the instructions to color them. This will encourage you to consider each and every part of the scene and the scene in its entirety as you complete each card.

The study or science of numbers is the foundation for all other studies of human knowledge. This study can be very simplistic or in-depth depending on your own interests. In our study of the Tarot, the number conflict between the number of the card and the number related to the Hebrew letter is there because each has a separate purpose. The values of the Hebrew letters are used to determine the numerations of the words. You will also note that the Hebrew letters follow in a series from one to ten, The Magician to The Hermit, and in the following cards in a series of 20 to 90 and then 100 to 900. There are five letters which have two numerical values. These five letters change their value if they are the final letter in a word and they are written slightly different. Learning the number symbols is important because they are the basis of the occult language used to transmit knowledge from generation to generation.

The following shows the basic meanings of the numerical signs:

- 0 **No-Thing**: the undifferentiated **Power** preceding all manifestation; absence of quantity, quality or mass; Super-consciousness.
- 1 **Beginning**: first in the numerical series; inception; initiative; the **Primal Will**; Self-consciousness.
- 2 **Duplication**: repetition; **Wisdom** and Science; opposition; polarity; Sub-consciousness.
- 3 **Multiplication**: increase; growth; augmentation; expansion; amplification; **Understanding**.
- 4 **Order**: system; regulation; management; supervision; **Reason**.
- 5 **Mediation**: adaptation; intervention; adjustment; **Justice**; Intuitions.
- 6 **Reciprocation**: interchange; correlation; response; coordination; **Beauty**.
- 7 **Equilibrium**: mastery; poise; rest; conquest; **Victory**.
- 8 **Rhythm**: periodicity alternation; vibration; pulsation; **Splendor**.
- 9 **Conclusion**: goal; end; completion; fulfillment; **Foundation**.

Table of Correspondences

TAROT - NETIVOT

Key	Title	Letter	Letter Name	Letter Meaning	Gematria	Beginning Sephirot	Ending Sephirot	Path
0	The Fool	א	Aleph	Ox	1	Kether	Hokmah	0/11
1	The Magician	ב	Bet	House	2	Kether	Binah	1/12
2	The High Priestess	ג	Gimel	Camel	3	Kether	Tiferet	2/13
3	The Empress	ד	Dalet	Womb/Door of Life	4	Hokmah	Binah	3/14
4	The Emperor	ה	Heh	Window	5	Hokmah	Tiferet	4/15
5	The Hierophant	ו	Vav	Nail/Hook	6	Hokmah	Chesed	5/16
6	The Lovers	ז	Zayin	Sword/Weapon	7	Binah	Tiferet	6/17
7	The Chariot	ח	Chet	Field and Fence Enclosing It	8	Binah	Geburah	7/18
8	Strength	ט	Teth	Snake	9	Chesed	Geburah	8/19
9	The Hermit	י	Yod	Hand of Man	10	Chesed	Tiferet	9/20
10	The Wheel of Fortune	כ	Kaf	Curve	20 Final 500	Chesed	Neitzach	10/21
11	Justice	ל	Lamed	To Teach	30	Geburah	Tiferet	11/22
12	The Hanged Man	מ	Mem	Water	40 Final 600	Geburah	Hod	12/23
13	Death	נ	Nun	Fish	50 Final 700	Tiferet	Neitzach	13/24
14	Temperance	ס	Samekh	Tent Peg/Prop	60	Tiferet	Yesod	14/25
15	The Devil	ע	Ayin	Eye/Foundation	70	Tiferet	Hod	15/26
16	The Tower	פ	Peh	Mouth	80 Final 800	Neitzach	Hod	16/27
17	The Star	צ	Tzadi	Fish Hook	90 Final 900	Neitzach	Yesod	17/28
18	The Moon	ק	Qof	Back of the Head	100	Neitzach	Malkut	18/29

19	The Sun	ר	Resh	Head & Face of Man	200		Hod	Yesod	19/30	
20	Judgment	ש	Shin	Tooth or Serpent's Fang	300		Hod	Malkut	20/31	
21	The World	ת	Tau	Signature or Mark	400		Yesod	Malkut	21/32	

Table of Correspondences

Hebrew Alefbet

Letter	Name	Gematria	Letter Meaning	Tarot Key	Tarot Title	Tarot Intelligence	Path	
א	Alef	1	Ox	0	The Fool	Fiery Int.	0/11	
ב	Bet	2	House	1	The Magician	Int. of Transparency	1/12	
ג	Gimel	3	Camel	2	The High Priestess	Uniting Int.	2/13	
ד	Dalet	4	Womb or Door of Life	3	The Empress	Luminous Int.	3/14	
ה	Heh	5	Window	4	The Emperor	Constituting Int.	4/15	
ו	Vav	6	Nail/Hook	5	The Hierophant	Triumphant & Eternal Int.	5/16	
ז	Zayin	7	Sword/Weapon	6	The Lovers	Disposing Int.	6/17	
ח	Chet	8	Field and Fence Enclosing It	7	The Chariot	Int. of the House of Influence	7/18	
ט	Teth	9	Snake	8	Strength	Int. of the Secret of All Spiritual Activities	8/19	
י	Yod	10	Hand of Man	9	The Hermit	Int. of Will	9/20	
כ	Kaf	20	Curve	10	The Wheel of Fortune	Rewarding Int.	10/21	
ל	Lamed	30	To Teach	11	Justice	Faithful Int.	11/22	
מ	Mem	40 Final 600	Water	12	The Hanged Man	Stable Int.	12/23	
נ	Nun	50 Final 700	Fish	13	Death	Imaginative Int.	13/24	
ס	Samekh	60	Tent Peg/Prop	14	Temperance	Int. of Probation	14/25	
ע	Ayin	70	Eye/Foundation	15	The Devil	Renewing Int.	15/26	
פ	Peh	80 Final 800	Mouth	16	The Tower	Exciting Int.	16/27	
צ	Tzadi	90 Final 900	Fish Hook	17	The Star	Natural Int.	17/28	
ק	Qof	100	Back of the Head	18	The Moon	Corporeal Int.	18/29	

ר	Resh	200	Head or Face of Man	19	The Sun	Collecting Intelligence	19/30	
ש	Shin	300	Tooth or Serpent's Fang	20	Judgment	Perpetual Intelligence	20/31	
ת	Tau	400	Signature or Mark	21	The World	Administrative Intelligence	21/32	



The Fool – Key 0 – Aleph א – Gematria 1

The first thing to notice on the card is the Hebrew letter Aleph. Notice how the letter is made up of variations of the Yod, which is the smallest Hebrew letter. Aleph means Ox which represents the motive power of agriculture. The Aleph also symbolizes the Cultural Power, Life Force Energy, or Creative Energy which comes to us in the physical form from the Sun. The Hebrew word for this energy is Ruach. The title of the card is The Fool. A meaning of the fool is a “bag of wind” which translates into breath or air. The 0 represents the No-Thing (Ein) or limitless unconditional Life-Force Energy. The 0 also represent the Cosmic Egg or Ring-Pass-Not which contains everything for growth and development. If you look at the definition for one, it is a Beginning. Thus The Fool is the beginning of a cycle in which a person can have much confidence and joy. Fiery or Scintillating Intelligence is the mode of consciousness for Aleph and the planet Uranus is attributed to this letter.

In the upper right-hand corner is the white sun which is also called the One Force. It is also the Spiritual Sun which never reaches its zenith and never decreases in power. It represents the universal Life-Force Energy which is concentrated and radiated from all the suns in the universe. The color yellow for the background represents air. The mountains in the background represent the abstract mathematical concepts which are behind all creation and knowledge. The white of the mountain peaks represents snow which when melts, feeds the valley below. Those symbols that appear in the background deal powers or potencies; those in the mid-area are symbols of laws or agencies; those symbols in the foreground deal with conditions or effects.

The Fool looks like an androgynous youth and is facing North West. The North West direction represents the unknown and the state just prior to the initiation of a creative process. The youth represents that the One Force never ages and is always at the height of its power and has great confidence and joy. The Fool's hair is yellow (radiant energy of the breath) and there is a wreath around the head. The green wreath represents the vegetable kingdom and Victory. The Wand is Will and the wallet is Memory; the rose is white and represents purified desire. The Fool's clothes are a white under garment and a dark outer garment that is lined in red. The white represents purity, truth and wisdom, while the dark outer garment represents ignorance and delusion. The red is about passion, desire and action. The belt around the waist has twelve links which represents the astrological signs or time. The seven links that show represent the seven heavenly bodies known to the ancients. In order to break through our illusions we need to transcend our tie to linear time. The Hebrew letters IHVH are shown in the white cloth by the neck. There are ten wheels (surrounded by seven trefoils) on the garment and these wheels have eight spokes. The ten wheels represent that there are ten phases of manifestation and the seven trefoils represent the seven great rays of creative universal energy. Each one of the trefoils has a triple expression of integrating, equilibrating and disintegrating. You will notice that there is a circle with a triple flame, an eight pointed star and a crescent moon. The flame represents the life breath prior to manifesting; the star the sun, and the crescent the moon.

The black wand over The Fool's shoulder (Will) links with the wallet which is Memory. The eye (Eye of Horus) on the wallet is the all seeing eye and alludes to the higher visions one can develop to gain access to the universal memory. There are ten stitches on the flap and are the same as the ten wheels. The eagle represents the sign of Scorpio. The white rose in the left hand represents freedom from the lower forms of desire and passion. The color of his hose represents earth and the yellow shoes represent air. The white dog is a descendent of the wolf and represents that the dog has been tamed by its human master. The dog is also a symbol of intellect which is subordinate to super-consciousness.



The Magician - Key 1 – Beth ב – Gematria 2

The second letter is Beth and means house. There are many applications of science attributed to building a house. This knowledge used to be called a “mystery” and was under the direction of the priests associated with the Hermetic sciences. Mercury is the astrological attribute of Beth and represents both the planet and god. The Egyptians related their forty-two books of science to Mercury. Mercury or Hermes was the great magician and transformer and carries the caduceus, which is the symbol of the healing arts. Mercury also represents the messenger of divine truth.

Beth is one of the seven double letters. These letters have two ways to pronounce them, hard or soft, and are assigned a pair of opposites. Life and death are assigned to Beth and Mercury as they both can create as well as destroy.

The Magician refers to man as the one who directs the force by which he transforms his consciousness and reaches the stage of initiation. The number one of this card refers to a point which limits the field of activity and the Magician focuses his concentration and attention on that point. This indicates to humans that you have to learn to concentrate in order to learn about the great works. Magic is another name for science and has to do with the building of a house. This magic takes advantage of the earth’s magnetic vibrations. A person builds his own personal house by developing their higher states of consciousness. The self-conscious states of mind initiate and determine the sub-conscious reactions. And a true magician knows that all magic has a mathematical and geometrical basis.

The roses above the Magician’s head represent Beth because the arbor is a simple shelter. The red roses represent Venus and desire. The energy the Magician draws from above is modified by desire. All of our waking consciousness is motivated by some type of desire.

The infinity symbol (figure 8) is the occult number pertaining to Hermes. It is also a symbol of the Holy Spirit. It means dominion over the horizontal plane. The Magician’s black hair represents ignorance. The white band around the crown means that this ignorance is limited by knowledge. His uplifted right hand represent drawing the energy from above; the wand it holds represents the phallic symbol which can be purified or sublimated by certain magical procedures. It also indicates “That which is below is as that which is above, and that which is above is as that which is below.” The two points refer to the duality of all magical operations – those leading to higher consciousness and those resulting in death.

The left hand pointing down represents dominion of power to a plane below. It is a gesture of concentration and represents Jupiter. It indicates that concentration is the secret of direction and control of forces below the plane of self-conscious awareness. This shows the bringing of the light from above to things below.

The Magician’s white inner robe represents the light of perfect wisdom; the snake girdle represents wisdom and eternity and is colored blue-green because it is the symbol of the serpent force which is utilized in all magical practice. The red outer garment represents desire, passion and activity. The red robe may be slipped off at will. This means that self-consciousness may enter into action, or abstain from it, according to circumstances.

The table is the field of attention. On the table are the four symbols of the Tarot suits. They refer to the natural life symbols of fire (wand), water (cup), air (sword) and earth (coin or pentacle). They symbolize the four worlds and correspond to the letters of IHVH. The pentacle shows words, numbers, geometrical figures and sigils. These change depending on the magical operation. The Pentagram expresses:

“The Pentagram expresses the mind’s domination over the elements, and it is by this sign that we bind the demons of the air, the spirits of fire, the specters of water, and the ghosts of earth. It is the star of the Magi, the burning star of the Gnostic schools, the sign of intellectual omnipotence and autocracy. It is the symbol of

the Word made Flesh...The sign of the Pentagram is called also the sign of the Microcosm. Its complete comprehension is the key of the two worlds – it is absolute natural philosophy and natural science.”

The book cautions about taking the first sentence too literally. There is meaning behind the surface meaning and a person needs to find that for themselves.

These implements correspond to the four esoteric admonitions which are: 1. TO WILL (wand); 2. TO KNOW (cup); 3. TO DARE (sword); and 4. TO BE SILENT (pentacle).

The Magician’s garden is lush and productive and represents the sub-conscious plane of mental activity. Red roses represent desire and the white lilies represent abstract thought untinged by desire. The roses symbolize the number five and represent art, invention and the adaptation of abstract truth to practical ends. The five roses correspond to the five senses. The lilies have six petals and show the six pointed star in the middle. These four lilies represent the four planes.



The High Priestess - Key 2 – Gimel λ - Gematria 3

Gimel means Camel – This can also mean travel, commerce, and communication since the camel is used for transportation and is known as the “Ship of the desert.” The Moon is the celestial body assigned to Gimel. Note the headdress of the High Priestess.

Gimel is a double letter (having hard and soft pronunciation). The opposites it connotes are Peace and Strife. Consider the roles commerce, communication and transportation play on a global scale and how they relate to Peace and Strife (war).

Uniting Intelligence is the mode of consciousness attributed to Gimel as a camel “brings” distant places together and unites them. Unification is the power of bringing together to join pieces, ideas and people to make a harmonious whole.

The title High Priestess literally means Chief Feminine Elder or primary receptive aspect of the life power. Thus the woman in this key is identical with the First Mother or First Matter or as the alchemists said “Prima Matera” or the Virgin

Diana. In fact the High Priestess corresponds to all the virgin goddesses of the ancient world and represents Eve before she met Adam. The veil between the pillars represents the fact that the High Priestess is a virgin or “virgo intacta.”

The High Priestess sits in a temple of Solomon. Her number is two (2) and represents duplication, reproduction, reflection, copying and transcription. Two also represents duplicity, untruth, error and delusion. Think how the subconscious duplicates and repeats the mistakes of faulty, superficial, self-conscious observation. She is the “Keeper of Records.”

The walls and her vestments are blue. This represents the moon and water. This represents the creative world, the cosmic mind and the root substance.

The two pillars are those of Solomon and Hermes (like the ones in Masonry). They are opposite in color but alike in form; opposites, positive and negative. The white pillar, affirmation, has the letter Yod which is the initial for the word Joachim. The black pillar represents negativity and has the letter Beth which represents the word Boaz. The High Priestess is the Middle Pillar! She is the path of equilibrium. She is silent, non-judgmental, receptive, non-discriminating and neutral. The bases of the columns are cubes as is the High Priestess’ throne. The cube represents the material world or the physical manifestation. The cube also symbolizes salt which forms cubes in its crystalline form. (How might this relate to water?) The High Priestess sits on the cube because the basis of all subconscious mental activity is what has actually happened and actually exists.

The caps of the pillars are lotus buds and represent the latent unrealized power of the virgin High Priestess. The forces of sub-consciousness have not come into full bloom.

The veil behind the High Priestess contains palms and pomegranates. It contains both male (palms) and female (pomegranates) symbolism. It suggests the union of the positive and negative, male and female forces. Compare the arrangement of the pomegranates and the palms with the Tree of Life. Note the position of the High Priestess corresponds to the path on the Tree from Kether to Tiphareth.

She holds a scroll marked Tora (much like Torah – or law), but it is the book of memory. It is the subconscious’ record of all that has happened, all mental and physical stresses that are indelibly impressed on the subconscious – both personal and universal. It contains the history of all of us throughout all time. It is the collective subconscious and is that which allows us to communicate telepathically.

The water that flows out to the High Priestess’ robe represents the stream of consciousness. Watch for it in later Keys.

The cross on her tunic is equal sided meaning – equal male and female aspects. It denotes the equality of the male and female aspects, the active and passive. It also, in Case’s words, “foreshadows the completion of the

entire cycle represented by the 22 Tarot Keys, because this cross of equal arms is the original form of the Hebrew letter Tav." Finally, the arms of the cross are related to the number four, or square of two, as are the square sides of the cube.



The Empress – Key 3 – Dalet T - Gematria = 4

Dalet signifies a door that is something that admits or bars, something through which something or someone passes. Some say it represents the door of life, the womb. The door represents protection, defense and safe-keeping. This relates to the mode of consciousness connected to Dalet in that it has to do with personal safety, self preservation, development of all that is useful to us. The door also suggests ingress and egress, motion in and motion out. Consider how this relates to the mind and the soul.

It has a little bit of Bet (House) and a little bit of Gimel (Camel) because it is both in and out – departure and return

The mode of consciousness is sub consciousness and the subconscious response to self-conscious suggestion and interpretation that determine whether our ideas are wise or foolish. And Wisdom and Folly are the opposites assigned to Dalet by Kabbalists. The occult meanings of Dalet clearly point to the meaning of subconscious which has little or no power of inductive reasoning but has great power of deductive reasoning. Kabbalists call this Luminous Intelligence – the subconscious can enlighten us from its deductions and lead us to safety of true knowledge.

The Empress literally means “she who sits in order.” She is the feminine ruling power and consort of the Emperor (the next Tarot key). She is the warm mother goddess in contrast to the High Priestess who is the cold, virgin goddess. She is the number three, which is about multiplication, development, growth, unfoldment, and therefore expression. The three is the understanding, or looking forward, into what has been manifested in contrast to two (wisdom) which looks back into the self knowledge of one (I AM). It is through growth that you are able to manifest with the Limitless Light.

The background is a rich fertile garden (compare this to Key 1). In the background are cypress trees which are sacred to Venus. There is ripening wheat in the foreground which is sacred to Isis/Hathor/Ceres. She is Mother Nature.

The stream and pool in the background is the “stream” of consciousness. Consider the relationship to Key 2. The stream falling into the pool is subtly suggestive of the union of male and female modes of cosmic energy. Her yellow hair symbolizes radiant energy and the green myrtle in her hair, nature. (Consider the wreathes in the other Keys) The meaning here is that reaching the subconscious is reaching nature.

She wears a crown of 12 stars and the moon under her feet (like the woman in Revelations). The stars are 6 pointed – meaning she has dominion over the laws of the Great World. And they also represent the zodiac. Where else have we seen 12 objects similarly? The moon is like the one under the High Priestess and represents primary powers of subconscious, but the Empress is the subconscious impregnated by seed ideas.

She holds a heart shaped shield with a dove symbolizing the Holy Spirit. The necklace of pearls relate to Venus and the moon. Her scepter has a globe – showing that she has dominion over the physical world (as does our subconscious). At the top of the globe is a cross so that the ornament on the head of the scepter is an inverted symbol of Venus and femininity. Her seat is a stone bench representing the mineral world over which she also holds dominion through the subconscious.

Meditate upon this card and consider the roses to the left of the Empress, the significance of the yellow clad foot on the crescent moon and the red triangle on the white material at her breast.



The Emperor – Key 4 - Heh ה - Gematria = 5

Heh ה means Window (literally Wind-Door). Consider the function of a window. It is constructed to permit Light (knowledge) and Air (life-breath or Spirit) to enter into the House (Bet) of Personality. Windows also allow you to decide whether to admit someone who comes to the door. The Emperor on the Tree of Life connects Chokmah to Tiferet or Wisdom to Beauty.

Sight is the sense function attributed to Heh. Consider that a window allows you to see out of the house. The organ of sight is the eye or the window to the soul. Constituting Intelligence is the mode of consciousness attributed to Heh. To constitute is to make anything what it is; to frame; to compose. It is also related to authorship and connected to paternity.

Heh is used in Hebrew like “THE” is used in English. Consider the Constituting Intelligence is the defining intelligence. To define something, we must first name it. This associates it with Adam (the namer). Our personal definitions of our experiences are accepted totally by our subconscious. Hence, our perceptions become our realities. We can change our perceptions and our realities but it

requires conscious effort to do so.

The title for The Emperor is “He who sets in order” – it implies both authority and paternity. It also signifies the head of government, the source of war, etc. The Zodiac sign attributed to this card is Aries (War) – a sun sign. (Note the side of the cube and the shoulder.) Aries governs the head and face. His crown is ringed with 12 triangles reminding us of the Empress’ crown of 12 stars.

The number four is about order, measurement, classification, recording and tabulation. It is also about memory and measurement. According to Case, “All the gifts of the Life-power are measured out. Every center of expression receives exactly what is coming to it, always.” This is a statement about the Law of Attraction, which is currently a buzzword of our time! Another aspect in Case’s book is the introduction to the Cube of Space. According to Case, “No more than hints of this cube symbolism can be given in this introductory text, but we thought best to include the figure of the Cube of Space, since careful study will reveal to discerning readers many clues to a deeper understanding of the Tarot symbolism.”

The orange background represents the exaltation of the Sun in Aries (consider Key 19). The mountains below are red and refer to the fiery quality of Aries. The mountains in the background are severe in contrast to the valley that the Empress sits in. They represent the sterility of mere supervision and regulation, unless there be something “living” to set in order. On the other hand it is the erosion of these rocks that provides the soil for the valley of the Empress’ garden. Below the base of the mountains is a river – this is the same flow of consciousness as in the other cards.

The rams head symbolism in the picture represents Aries also. The Emperor sits on a cube – the same as the High Priestess. This signifies that the laws of the One Life Power are represented everywhere and all levels of consciousness. His crown and cap both signify Aries because of color and shape.

The position of the Emperor is important. His arm is in the shape of an equilateral triangle and then his legs are that of a cross. The symbol of a triangle above a cross is an alchemical one representing sulphur – again symbolizing fire and Aries. His steel armor also represents Aries.

His robe is purple which means royalty. His scepter is a form of an Egyptian Ankh (sign of life). It has a T-Square on it that represents Geometry and Math and the letter Tav. These signify that the power of regulation comes from the exaltation of solar power and that right definition is in itself a sort of limitation that sets us free from slavery and circumstance. In his other hand is the globe, a typical symbol of dominion.

The emperor is an old man with a white beard shown in profile, representing the Ancient of Days (from the Bible and Kaballah). The Emperor is the consort of the Empress. He is the Magician after becoming the Father of the Empress’ children. After becoming a father he has the opportunity to exercise his paternal

authority. In one sense the Emperor is the grand architect of the universe. He is the supreme reason – the constituting power of the universe and man.

Psychologically, therefore, he represents the self-consciousness of a person. He is the lawgiver or regulator. He frames the constitutions of one's personal world.



The Hierophant – KEY 5 - Vav I - Gematria = 6

Vav, I, means nail or hook. It is something to hang other things on. Other things are dependent on it. It is a means of union – a means of support. As a Union, it conveys binding things together, linking. As a means of support, it is related to aid, assistance and ministry. Vav is like the English word “and.” It literally joins words together. The Hierophant connects Hokmah to Hesed, Wisdom to Mercy.

The central thought is Union. The Sanskrit noun Yoga means union and is similar to the Hebrew letter Vav. Yoga is also the root of our word Yoke. Yoga is a system where the personal consciousness is directly linked to the universal consciousness. Its object is direct, first-hand connection to the Universal conscious energy. This experience is considered natural though rare. The Hierophant is that mode of consciousness that is in effect when these types of experiences occur.

Hearing is the sense attributed to Vav because it links man to man by speech and man to God, through the Inner Voice. Yeshua often said “He who has ears to hear, let him hear.” The Sanskrit noun “sruti” means to hear and is the word for revelation. Knowledge of the higher realms of reality is made aware to us through an inner voice.

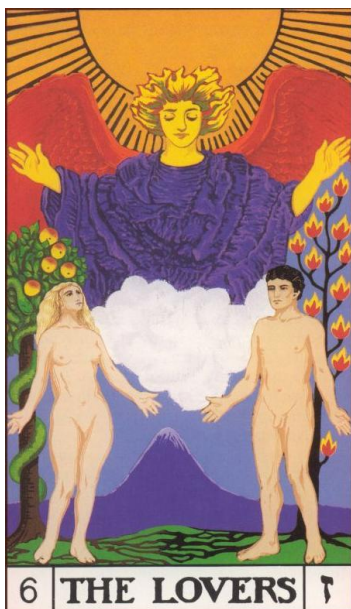
Triumphant and Eternal intelligence is the name of the mode of consciousness corresponding to Vav. It is triumphant because it gives assurance of the ultimate triumph of the life power and it is eternal because it carries with it the conviction of immortality and because the Inner Voice gives us solutions to particular problems by applying those principles which once we are aware of them we recognize them as true yesterday, today and forever.

Hierophant means “revealer of sacred things.” Some decks call this card “The Pope.” This is not to be associated too closely with the Catholic “Pope,” but the word Pope does mean Father (papa, padre). The path of this card is between Hokmah and Hesed. Hokmah is Abba or Father. Consider that the Hierophant could be considered the spiritual parent regardless of gender. The Hierophant is the bridge-maker who links our outer experience and our inner illumination.

The number five is about mediation because it is in the middle of one to nine. “Five is the dynamic Law proceeding from abstract Order (four).” Five is also a number of versatility. Case states, “The root – consciousness expressed through human personality is this One Law of mediation or adaptation. Man can change conditions. This is the secret to his power to realize freedom.”

Much of the coloring of this card is grey to show the balance of opposites. He sits between two pillars to continue the symbolism of balance of opposites. He sits on a stone chair – stone in Hebrew is spelled ABN – AB means Father also and BN means Son. His crown symbolizes radiant energy and wisdom. The crosses on his shoes represent the union of male and female. Note there are ten circles which are reminiscent of those on the Fool’s garments. His outer robe is red-orange for Taurus (his sign). This represents material world. Taurus is also represented by the two horned circles on the throne behind the Hierophant’s head. The blue inner robe is for purity and then the innermost white garment is for enlightenment and energy.

His crown is made of a triple tiara of gold symbolizing wisdom and radiant energy. The small globe at the top represents the archetypal world whereas the three layers of the tiara below it represent the creative, formative and material worlds. He is holding a golden staff that represents the dominion of the life power throughout creation. His two keys – one silver, one golden represent power, but also lunar and solar energy. The gold key represents the key to heaven and the super-conscious. The silver key represents the key to “hell” and the subconscious. The Hierophant represents intuition which follows reasoning and adds to it.



The Lovers – Key 6 - Zain 7 - Gematria = 7

Zain means sword or weapon. It is the opposite of Vav, the nail, because a sword cleaves, cuts, divides, separates. It has two edges symbolizing life's many possibilities, decisions and consequences. Discrimination implies acuteness and discernment, sharp like a sword's edge. It is the ability to make fine distinctions in order to reach viable and correct conclusions and decisions. When you do not wield the sword of discrimination and distinction and make your own decisions, those decisions will be made for you and may be less desirable than the decision you would have chosen.

Smelling is the sense attributed to Zain. It is attributed to keen perception, discernment and sagacity. An old Kabbalistic maxim is "Properties are discerned by the nose."

Disposing Intelligence is the mode of consciousness attributed to Zain. Dispose is literally to place apart or to arrange, to distribute, to divide. This also relates to "our disposition."

The Lovers is the usual title to this card. Some consider this the way of two paths. In the much older versions of Tarot, there are three figures – a child, a maiden and a crowned woman. These figures represent the Kabbalistic Son and Bride and the Kabbalistic Mother and is a reference to marriage. "The title intimates the union of opposite but complementary modes of existence."

The number six is about balance, equilibrium, symmetry, beauty; harmony of opposites, reciprocity; complementary activities, polarity, love.

The sun is the same as with the fool – the great light-source, the radiant energy that all creatures derive their personal force from. Here it is yellow, not white, indicating life and energy but also Ageless Wisdom.

The Angel is Raphael, angel of air (note the color of his skin). His violet garments have the same meaning since it is the compliment of yellow. This is reinforced by the clouds which surround him. He represents the super-consciousness, the cosmic life breath, Prana and thus is related to the Fool.

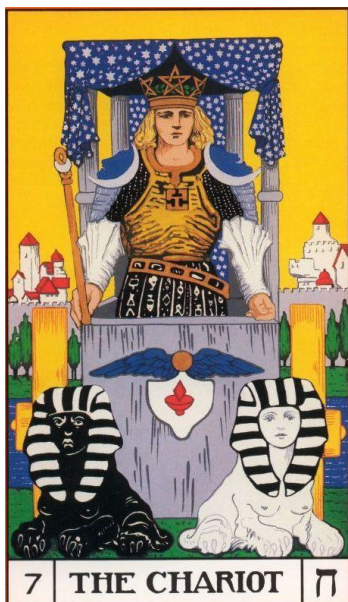
The mountains represent the habitat of the "gods" and are also phallic symbols. The mountains also represent the "Great Work" that of enlightenment. They represent the peaks we all must climb on our journey and our potential to succeed in that work.

The man is Adam – the namer of things. He is also the Magician. There is a tree with flaming fruit behind him. This fruit symbolizes the twelve signs of the zodiac – thus the tree is a tree of human life with all twelve types and since each is divided into three parts, the thirty-six subtypes of personality, or self-conscious life expression.

The woman is Eve. She is also the High Priestess and the Empress. Behind her is the Tree of Knowledge of Good and Evil. It contains five fruit – the five senses. Up the tree rises the serpent of sensation. This is because temptation arises from the remembrance of sensation. It also represents wisdom and redemption. This is because wisdom and liberation come from the right adaptation of these forces that at first tempt us.

The woman (subconscious) looks toward the angel (super-conscious) and the man (self-consciousness) looks toward the woman. Self-consciousness is not directly aware of super-consciousness. It is the subconscious that is aware of the super-conscious. (Contemplate the deeper meaning of this seemingly minor point) Health, happiness, and well being depend on the cooperation of these two modes of being. The relationship between self-conscious and sub-conscious should be loving intimacy. Note the two figures are nude; they hide nothing from each other. Is this our state? If we want the subconscious to work on our behalf, we must treat it lovingly and not try to bully it as this will yield the opposite result.

Self consciousness is the framer of suggestion. It can start the process through the suggestion but the suggestion must be formulated correctly so the subconscious can receive the guidance from the super-conscious above.



The Chariot – Key 7 - Cheth 𐤃 - Gematria = 8

The letter Cheth means a field and the fence enclosing it. The chariot represents enclosure, protection, defense; specific location; an area set apart for cultivation. This is a cultivated field as opposed to the open country in Key 6. This is what happens in the mental field when we define anything. Speech is attributed to Cheth and indicates that words have protective and preservative powers and that using the words properly is a means of safety.

Intelligence of the House of Influence is the name for the mode of consciousness which is the house of inflowing power. In the human personality, forces flow into the personality from outside consciousness. It indicates that our thoughts and speech are based in our subconscious.

The Chariot is the title of this card although sometimes it is the Charioteer. This is about making yourself King of your circumstances as a natural consequence of your triumphs.

The number seven has many mystical meanings that could compose an entire book. The Bible has many references to this number as many of the books of the Bible were written on a plan of sevens – seven chapters, seven subdivision, etc. Seven relates to rest, safety, security and victory. It also represents a temporary cessation, not final perfection.

In the background is a walled city, which equates to a stone fence. The city contains houses with windows showing which indicates there is meaning behind the surface of this card. Case states: “Trees and a river in the middle distance remind us of the symbolism of Key 3, The Empress. This is correct because speech is not only composed of definitions, but also embodies mental imagery (Empress) and gives form to the stream of consciousness. As the river, in Tarot, rises from the watery substance of the robe of the High Priestess, and as trees are associated with the rich fertility of the Empress’ garden...” This is to remind us that all of the cards are building on each other to create a story.

The chariot is a movable fence in the shape of a cube and is the color grey to symbolize wisdom and the union of father and son. Above the chariot are four pillars supporting a starry canopy. The number four means order and measurement and the four elements of air, fire, earth and water. The pillars are divided in half and represent “That which is above is as that which is below.” The circles around the pillars are to remind us that the elements are encompassed by the One Spirit. The canopy represents celestial forces and their descent into the physical plane using the four elements as a means for manifestation.

The shield, the wall in the background and the chariot itself all represent the field and the fence surrounding it. The red symbol on the shield is a Hindu representation of the male-female unity. The winged globe above the shield represents aspiration. The crown, the color of the man’s hair, the lunar crescents, his body armor, belt and skirt and the scepter he is holding all have significance. Case states: “Everything about the charioteer suggests that he sums up all the powers and potencies of the personages who have preceded him in the series of major trumps. He is their synthesis. He is the true Self, the Master-power behind all forms of life-expression.”

The chariot and canopy is a symbol of the combination of celestial and terrestrial forces. The shape of the chariot and the man within are a symbol that man is “the living temple of the Most High.” The sphinxes are a representation of Mercy and Severity and the senses. They appear to be resting which is a representation of the number seven. The yellow wheels of the chariot signify light energy and the planet Jupiter.

Paragraph two on page 99 of the Case book begins an in-depth philosophical discussion on the meanings of this Key and provides a nice insight into our human personality.



Strength – Key 8 -- Teth ♁ -- Gematria = 9

Teth means snake. This is known to occultists as serpent power. It is cosmic electricity, the universal life-principle, and the conscious energy in all things.

The serpent also represents secrecy, subtlety, and wisdom. This power is “the tempter” in Genesis and when overcome it is the means to salvation. The ancients saw the snake shed its skin so it symbolizes reincarnation and rebirth.

Taste is the sense and digestion the function of Teth. Digestion is literally feeding and is symbolized with the Oroborus (the snake eating its own tail). This stands for the cycle of life and immortality. It is self-sustaining.

Leo, the Lion, is attributed to Teth. Leo is ruled by the Sun. Intelligence of All Spiritual Activity or Intelligence of All Secret Works is the mode of consciousness attributed to Teth. Remember that all things are actually spiritual.

The number eight represents rhythm, alternate cycles of involution and evolution, vibration, flux and reflux. It also represents that opposite forms of expression are

the effects of a single cause. It is also the digit value of the name IHVH (Jehovah) and 888 is the numeration of the name Jesus in Greek.

The card alludes to the fiery life power which is the source of all human action. The scene in this card is an uninhabited plain. This is to show that it is apart from human habitation. The woman’s yellow hair identifies her with the Empress so that we may identify her with creative imagination and the subconscious generation of mental imagery. Instead of a wreath, she wears a crown of flowers. This means that the organic process is closer to fruition in this card. The horizontal 8 appears over her head. This refers to the same meaning as with the Magician (symbol of the Holy Spirit and dominion over the horizontal plane). It also means that something of the Magician has been transferred to the woman. It shows that the subconscious is affected and altered by self-conscious mental states.

The white, unadorned gown she wears symbolizes purity. Since it is the color of Keter (the Crown of the Tree of Life) it means that it is pure spiritual influence from the Primal Will. She wears a belt of roses that is twisted into another figure 8. She leads the lion with this chain of flowers. It signifies that when we weave our intentions we can do wonderful things. The lion, as king of beasts, represents all subhuman forces. She tames the lion and opens its mouth. Opening its mouth means that she makes it articulate. This brings it into humanity. This symbolizes that the subconscious is in control of all subhuman manifestations of cosmic energy.



The Hermit – Key 9 -- Yod ך -- Gematria = 10

Yod means the hand of man. It is the open hand. It indicates power, means, direction, skill, and dexterity. It is a sign of inclination rather than actual activity. The open hand is a beneficial symbol worldwide and indicates the freedom of the Supreme Spirit.

Yod has special significance in Kabbalah because it is the first letter of the Tetragrammaton (YHWH). The tip of the letter represents Keter and the body of the letter represents Hokmah.

The sense of touch is attributed to Yod. Esoterically, the letter Yod corresponds to the experience of union with the Supreme SELF, the true I AM. This experience is compared by occult writers to the ecstasy of sex. This state is what the Bible calls "Heaven". Therefore Jesus said that in Heaven there is neither marriage nor giving in marriage because in the blissful state of union there is no sense of otherness or separation.

The zodiac sign associated with this letter is Virgo and the "virginal" sense is related to the above idea. Intelligence of Will is the mode of consciousness attributed to the letter Yod. Case states: "The word translated above as 'Will' means primarily 'delight,' and has, for supplementary meanings, 'pleasure, intent, purpose, determination.' Thus we find that all descriptions of mystic experience agree that it is first-hand knowledge of an ineffable glory, of an unspeakable bliss, and of an intensely certain and definite, though incommunicable, knowledge of the meaning and tendency of the cosmic life-process...."

The Hermit is a title referring to a passage in Kabbalah which says "Yod is above all, and with Him is none other associated." This represents the Father. A hermit lives alone, isolated. The picture shows him alone on a snowy mountain peak. He is high above travelers, holding his lantern as a beacon. His white beard shows that he is the "Most Holy Ancient One". His gray robe suggests another Kabbalistic title for the One "Concealed with all concealment". He is the Source of all, yet is he also the goal of all endeavors. Every practice aims at the union of personal consciousness with the Cosmic Will.

The Key 9 means completion. Consider the analogy between 0 – The Fool and 9 – the Hermit. Nine represents the Absolute as the Goal of existence while 0 represents the same Absolute as the Source of all. Thus the Fool is a youth and the Hermit is a bearded ancient.

He stands in darkness because what is behind our personifications of Supreme Reality is darkly incomprehensible to our intellects. The peak he stands on is snow-capped because to us the Ancient One is an abstraction, cold and far removed from the warmth of every-day life. He carries his own light for the benefit of any that are trying to reach Him. The light is a golden Hexagram symbolizing union. Even though he appears to be alone he is actually lighting the path for the multitudes below. He has no need to climb, so the staff is in his left hand and is a tool of the Magician.

The Hermit is the Supreme Will, the cosmic, eternal urge to freedom. Psychologically, this is the state of being conscious that all volition is universal, rather than personal.



The Wheel of Fortune – Key 10 – Kaph -- \curvearrowright -- Gematria = 20, Final letter = 500

Kaph primarily means a “curve”. Kaph is the hand of man in the act of grasping. To grasp is to hold, to master, to comprehend. These ideas will be in sharp contrast to Yod and the Hermit.

Wealth and poverty are the pair of opposites attributed to the double letter Kaph. These are the extremes of circumstances.

Intelligence of Conciliation or Rewarding Intelligence of Those Who Seek is the Kabbalistic name of this mode of consciousness. This is the establishment of harmony and order. This brings the fruition of “Seek and ye shall find.” Reconciling apparent differences, which leads to winning over seemingly antagonistic forces.

The Wheel of Fortune combines the ideas of rotation, cycles, whirling motion and simultaneous ascent and descent (evolution and involution). Occult teaching asserts that what appears to be by chance really isn't. Every effect is the consequence of preceding causes.

The Wheel is adapted from Eliphaz Levi's diagram of the Wheel of Ezekiel. At the corners of the card are the 4 animals mentioned in Ezekiel 1:10 and Revelation 4:7. They correspond to the fixed signs of the zodiac: The bull to Taurus; the lion to Leo; the eagle to Scorpio; the man to Aquarius. The numbers of these signs are 2, 5, 8, and 11 which add up to 26, the number of YHWH. In this the Y is the Lion, the first H is the Eagle, the V is the Man, and the final H is the Bull. Thus the “Living Creatures” signify the fixed, eternal modes of the One Reality. They are static compared to the turning wheel. That which was, is, and shall be remains ever the same, while everything rotates within it.

The wheel is the whole cycle of the cosmos. Its center is the archetypal world; the inner circle is the creative; the middle is the formative; and the outer is the material. These reflect the four lower Olamot in the Tree of Life. The eight spokes are the eight pointed star in Key 17 and represent the Universal Radiant Energy.

A wavy serpent (suggesting light vibration) descends on the left side of the wheel. This represents the involution of the cosmic radiant energy into the conditions of name and form.

Anubis (the Egyptian Jackal-headed God of the Dead) rises on the right side of the wheel to represent evolution of consciousness from lower to higher forms. His head represents intellectuality where his color typifies desire and activity (red).

The Sphinx at the top represents the real Self of man, behind personality. When unfoldment comes, we become aware of the One Thing which transcends personality. This One Thing is the one who brings the riddles of existence. It is motionless while the wheel turns.

Inside the circle are the letters TARO and YHWH. TARO represents 671 which represents Malkuth or Kingdom. YHWH represents 26 the name of the Father. The total of the letters come to 697 which breaks down to 22 – representing wheel and the 22 major cards of the Tarot.

Psychologically, this key represents the law of periodicity in mental activity, where mental states tend to reoccur in rhythms. This also represents the law of cause & consequence or Karma.



Justice – Key 11 – Lamed -- ל -- Gematria = 30

Lamed means “to teach” or “to instruct”. It can also mean an “ox-goad”. Since Aleph is the Ox, Lamed stands for that which urges and guides the manifestation of the cosmic power represented by the Fool.

This cosmic power is all pervading and all embracing, so there is no other power outside it. We must understand, then, that Lamed stands for something within the Life-power. It represents an inward urge and inward capacity for self-direction.

In the Hebrew Book of Formation, the special function assigned to Lamed is Work or Action. This is also the basic meaning of the Sanskrit word Karma.

Libra is an air sign and the sign representing Justice. Our subconscious deductions from experience are the seeds of Karma and actually the basis of all our activity. From them we gain instruction and knowledge.

Faithful Intelligence is the mode of consciousness attributed to the letter Lamed. The Hebrew for faithful is AMN (Amen). This word is related to the Sanskrit AUM

or OM and the Egyptian god Amun (often written Amen).

Justice signifies the active administration of Law. It also makes us think of balance, poise, accuracy, equity, etc. The central figure is a personification of Justice, but she wears no blindfold. Her yellow hair is like the Empress. She also can be associated with the woman who tames the lion in Key 8 (Strength). Key 8 & 11 represent different aspects of the same power.

Red and green robes represent action and imagination. Underneath is a blue undergarment – the color of the robes of the High Priestess. When 11 is brought to its lowest aspect it is 2 (the High Priestess). For all imagination is based on memory.

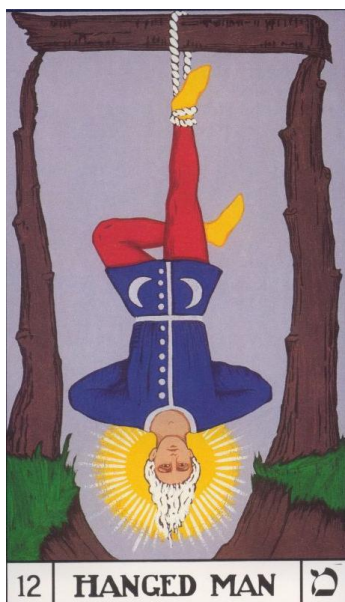
The gold scales are a reminder that light may be a measure of action.

The Yellow background represents air – for Libra – an air sign. The violet curtains refer to the Wheel of Fortune to suggest that the veils of mechanism conceal from the uninitiated that the whole universe is permeated by the Life Breath of Spirit (symbolized by yellow).

The sword is steel and is an indication that all action destroys as well as builds. It can also represent the elimination of waste from wisely directed action.

The general meaning of Key 11 is that education has equilibrium for its aim. It requires the elimination of useless, outworn forms. Education is completed by action and work. Merely hearing the word or reading it is not true education. Action is required.

Psychologically, this picture illustrates the law of poise and self-direction. A balanced personality is faithful, constant, and confident. The practical significance is that you only really know when you have acted and that equilibrium demands the elimination of waste.



The Hanged Man – Key 12 – Mem -- ם -- Gematria = 40, Final Letter = 600

This is the second of three Mother letters in the Hebrew alphabet. Its name literally means “seas”, but like many plurals in Hebrew it designates a general idea, in this case, “water”. Alchemists call water the mother, seed, and root of all minerals.

Water, represented by Mem is the first mirror. Water reflects images upside down and this idea is carried out by the symbolism of Key 12. This is life in a reflected image.

Hanged man means occultly, suspended mind. Man and mind are from the same Sanskrit root. This also reflects the utter dependence of the human personality on the cosmic life.

The youth hangs from a T-cross made from living wood. It also stands for the Hebrew letter Tav or Tau (the last letter of the Hebrew alphabet).

His legs form a cross and the lines from his arms to his hair form a reversed triangle. The cross is the number four and the triangle is the number three. Multiplying this together results in twelve – representing twelve zodiac signs and also the complete cycle of manifestation.

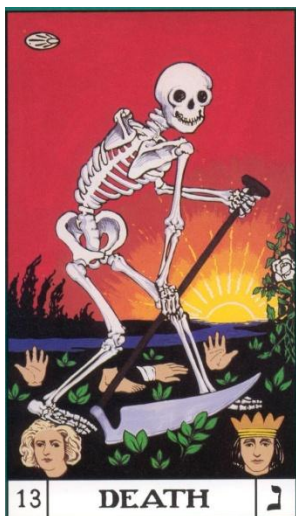
The three represents the Empress – the Great womb. The four represents the Emperor. The hanged man’s upper garment is blue (to symbolize water and the High Priestess (universal mind stuff). The man’s head having light around it symbolizes LVX (Light) and is a manifestation of Logos. His white hair suggests the Emperor and the Hermit. He is the ancient of days manifested in human personality. LVX (in Latin) stands for Light and is the same as the Hebrew Lord (or Adonai). The One Light is the Word made flesh and is represented by the spelling of Jesus’ name. Yod-Heh-Vav-Heh is the spelling of YHWH. Jesus is spelled Yod-Heh-Shin-Vav-Heh.

This means YHWH delivers or YHWH saves.

Here is a man turned upside down, inverted, in a position contrary to that in which we find most people. This represents that the spiritual life is a reversal of the normal way of living, speaking, thinking, and acting. Hence Jacob Boehme said that the great secret is “to walk in all things contrary to the world”.

His leggings are red. This is to contrast the blue coat. Fire and water. This opposition is not by being an outspoken antagonist. In fact Mem is said to be mute. It is about a reversal of thought. The human personality is completely dependent on the All (symbolized by the tree in this card). Once the truth is realized the only sensible course of action is self-surrender.

The mental activity symbolized by the Hanged Man is “Not my will by thine”. It means that our personality is a partial expression of the All.



Death – Key 13 -- Nun -- ן -- Gematria = 50, Final Letter = 700

Nun is pronounced like Noon and as a noun means fish. As a verb (since fish are prolific) it means “to sprout” or “to grow”. The essential idea is fertility, fecundity, productiveness, generative power, and these ideas are bound up in thought and language.

Motion is the function attributed to Nun. In Hebrew this is “to walk”.

Change is the basis of manifestation.

Imaginative Intelligence is the mode of consciousness attributed to Nun. Kabbalists say “It is the ground of similarity in the likeness of beings”. That is it is the basis of similarity that is passed through procreation. All change are basically changes in mental imagery. Change the image and ultimately the outer form will change to

reflect it.

The card is called Death. The Bible says death is the last enemy to be overcome. “Overcome evil with good. Love your enemies.” These two brief sentences are the whole secret.

The forces of change which result in physical death are bad only because we misunderstand and fear them. They are forces connected with reproduction, and by right use of imagination they may be tamed and transformed. Death, like every other even in human life, is a manifestation of the law. When we understand the law we can direct the forces of change as to overcome death. Yet understanding will never be ours until fear of death and dying is overcome by right knowledge and by right interpretation of the phenomena of physical dissolution.

The picture is a skeleton with a scythe, reaping living hands, feet, and heads. Behind him is a river and the rising sun.

The skeleton is the basis for all movement in the human body. It is the framework that supports the human existence.

In the Old Testament it calls Joshua (Moses’ Successor) Joshua son of Nun. Jesus was named after him. Joshua and Jesus are the same name translated from different languages. There is a correspondence between Nun and Joseph. Nun means reproduction and Joseph means multiplication. Joshua and Jesus literally means Jah or YHWH liberates. This means that the entire cosmic order is liberative. In the human heart this is a continual urge. Thus, when it is written, “At the name of Jesus every knee shall bow,” it is eluding to the wisdom which declares the whole cosmic order to be a process making for freedom and every heart responds.

It is by death that social changes for the better come to pass. Old ideas pass away with the death of persons who hold them. New ideas gain currency as one generation comes to maturity. Thus the actual fact of death is an instrument of progress. And now the time is close at hand when man shall master the secret of death itself.

Psychologically, the emphasis falls on imagination. Change your ideas and your old conception of personality dies. Every few years you have a new body, made up of trillions of tiny beings (or cells). Change your intellectual patterns, and with the passing away of the present generation of cells new ones will come to take their place.

If your pattern is built in accordance with the ideas developed through self-surrender (as pictured by the hanged man), it will lead to a complete transformation of your personality. You will be able to say with St. Paul, “I die daily.”

Little by little there comes a complete readjustment of one's personal conceptions of life and its values. The change from the person to the universal viewpoint is so radical that mystics often compare it to death. They are more literal than many would suppose. It is by the death and reproduction of body cells that patterns created by imagination are finally fixed in personal consciousness.



Temperance – KEY 14 -- Samekh -- D -- Gematria = 60

Samekh means tent peg or prop. It is what makes a tent secure and corresponds to what would now be suggested to us by the foundation of a house. It is the letter-symbol for the foundation of the house of life. It is what sustains, preserves, and maintains our personal existence.

Wrath is the quality associated with Samekh, but this is a blind. The literal meaning of the original Hebrew is vibration. Vibration is the fundamental nature of the fiery power which makes sight possible and the source of all our strength. The idea is that vibration is the nature of manifestation.

Tentative intelligence or Intelligence of probation is the mode of consciousness associated with Samekh. It is the mode where theory is put to the test of practical application. It therefore suggests adaption. To adapt is to equalize or balance.

At the bottom of the picture is a pool, representing Yesod (the 9th Sefirot in the Tree of Life). This is the seat of the automatic consciousness (or vital demand) of mankind. The path corresponding to Key 14 is Tipheret on the Tree of life. This path continues to the Crown (Keter). The end of this path of attainment is the realization of the crown of perfect union with the Primal Will.

The angel of the Key is Michael – Archangel of Fire. His white robe represents purity and wisdom. At his neck is YHWH (the Tetragrammaton). Below this is a 7 pointed, gold star representing skill. One foot of the angel is in the water (symbol of cosmic mind-stuff) and the other is on land (symbol of concrete physical manifestation).

The angel stands between a lion and an eagle. The lion is dark and a symbol of the Devil and fire. The angel pours water on the lion. From his other hand a fiery yod is dropping on the eagle. This is water on fire and fire on water – balance and temperance.

The angel is the true “I Am” of the human race. He is shown adapting and modifying the personal stream of psychic energy in the actions and reactions of the human personality.

The practical import of this is that we do nothing of ourselves.



The Devil – Key 15 – Ayin -- א -- Gematria = 70

Ayin means eye and foundation. It also signifies the external, superficial appearance of things. Since the eye is the major way we experience the world around us, symbolists use it to represent all sensation. The eye is an orb; vision is limited to the field of vision; through the eye we see appearances only. Hence the eye represents the limitations of the visible, and the bondage of ignorance resulting from the acceptance of these limitations and appearance being all there is.

Mirth is the function of consciousness attributed to this letter. It is usually provoked by incongruity, by human weakness, foibles, and shortcomings. Nevertheless, laughter is prophylactic. It purifies sub consciousness and dissolves mental complexes and conflicts.

Renewing Intelligence is the mode of consciousness attributed to Ayin. This is directly related to Mirth, because the perception of incongruities is what actually brings forth new ideas and adaptations. An incongruity is something which does not fit. When we find a fact that does not fit in with our beliefs, we are obliged to revise our theories, unless we are the sort that prefers a comfortable lie to an uncomfortable truth.

Capricorn, the goat, governs the knees to which we are brought in prayer by our sense of bondage and personal insufficiency. The natives of Capricorn are said to be quiet, studious, and somewhat inclined to materialism.

Internally, we know that we are potential lords of creation. But here we meet a check, and there a defeat, and so we try to explain why we are not actually as free as we feel ourselves internally to be. The symbolism of Key 15 represents the cruder forms of man's answers to the question, "What keeps me from expressing this inner freedom I feel?" At the same time, this picture indicates the correct solution to the problem, and points to the way which leads out of difficulty.

The Devil is the English for the Latin diabolus, adversary. The picture refers to man's ideas concerning the nature of that which seems so relentlessly to oppose his struggles for freedom. Remember, too, that the Devil personifies the serpent-power represented by the letter Teth and Key 8, Strength.

The name for the serpent which tempted Eve is nachash, and the Gematria of this word is 358, the value of Messiah. Here is a profound subtlety for numerical identity between Hebrew words points to some inner correspondence of meaning. It has been said that "The Devil is God as He is understood by the wicked."

The number of this card is 15, which is the Gematria of Jah, the divine name specifically attributed to Wisdom. The digits 15 reduce to 6, the number of the Lovers. Furthermore 15 is the sum of numbers from 0 to 5, so that the Hierophant (5) is also related. Compare The Devil to The Lovers and The Hierophant.

The background of the card is black, color of darkness, ignorance, limitation, and also of that which is hidden or occult. Here is an intimation that ignorance is the underlying cause of bondage. The ridiculous figure of the Devil is a veil for a profound secret of practical occultism.

The Devil is the polar opposite of the angel in the preceding card. He is also the caricature of the angel over the heads of the lovers, as the figures below the devil are bestial representation of the man and woman in Key 6.

Goat's horns on his head represent Capricorn. His bat wings represent the powers of darkness. His ears are that of a donkey to represent the obstinacy and stubbornness of materialism. His body is half masculine and half feminine because both sexes can partake of this.

Between his horns is a white, inverted pentagram. This is a key to the whole meaning of the figure. The pentagram is a symbol of humanity. Inverted it represents a reversal of man's place in the cosmos. In fact, the mistaken estimate of man's powers and possibilities is what keeps any one in bondage.

The devil's uplifted right hand has all its fingers open – in contradiction to the Hierophant. This says "what sensation reports is all there is". On the palm of the hand is the symbol for Saturn which stands for limitation, inertia and therefore ignorance.

In his left hand is a torch, giving little light. The torch is a phallic symbol, representing the transmission of life from generation to generation.

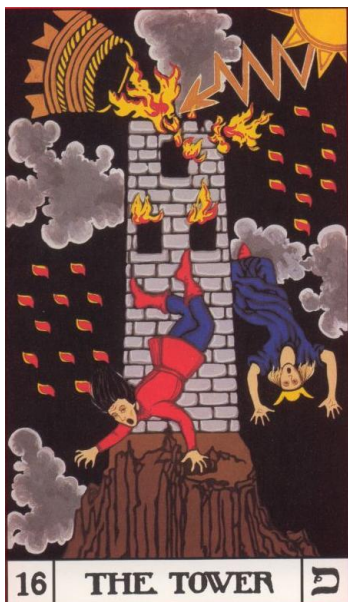
Also, the devil has a navel. He is the product of humanity; begotten of man's ignorance. His feet are the claws of an eagle. This corresponds to the sign Scorpio. This refers to materialization and misuse of the reproductive power, and its debasement in the service of sensuality.

He sits on a half cube. A cube represents that which was, is, and shall be. A half cube symbolizes half knowledge of this. This is the visible, sensory side of existence.

The figures chained to the half-cube represent self-conscious and subconscious modes of human mentality. Their horns, hoofs, and tails show that when reasoning takes its premises from surface appearances, human consciousness becomes bestialized. Notice that though they are chained to the cube, the loops are so large that they might lift them off their heads. Their bondage is imaginary.

This represents the first stage of spiritual enfoldment. It is the stage of conscious bondage. The devil represents the false conception that man is bound by material conditions; the false notion that he is a slave to necessity, a sport of chance.

In truth, the forces which appear to be our adversaries are always ready to serve us. The one condition is that we understand our essential freedom, and take account of the hidden side of existence. Then, when we conform our practice to our knowledge, liberation begins. The Devil is sensation, divorced by ignorance from understanding. Yet he is also what brings renewal, because we can make no real effort to be free until we feel our limitations. Until they irk us, we can make no effort to strike off our chains.



The Tower – Key 16 – Peh -- 𐤑 -- Gematria = 80, Final Letter = 800

Peh means the mouth as an organ of speech. It therefore symbolizes the power of utterance. Out of it are the issues of life.

Grace and Sin, or Beauty and Ugliness, are the pair of opposites attributed to the letter Peh, because the issues of life, directed by human speech, result in one or the other. Sin (or missing the mark) results in maladjustment or ugliness. Hitting the mark in right action results in the manifestations of beauty.

Active or exciting intelligence is the mode of consciousness attributed to Peh. It stirs up activity, sets things going, produces changes, effects transformations.

The Tower is also called The Lightning Struck Tower, The Fire of Heaven and The House of God. It refers traditionally to the Tower of Babel where human speech was confounded. When the card is called The House of God it refers to the traditional form of religious belief.

The Lightning Flash is the power drawn from above by the Magician. It is the sword of the Charioteer, the scepter of the Emperor, the force which turns the Wheel of Fortune, the scythe of Death, and the light from the Hermit's lantern. It breaks down existing forms to build new ones. The Lightning flash is a symbol of the tenfold emanation of the One Life Power. It is the Lightning Flash from Kabbalah – the path down the tree of life. In terms of consciousness, the Lightning Flash symbolizes a sudden, momentary flash of inspiration which breaks down structures of ignorance and false reasoning.

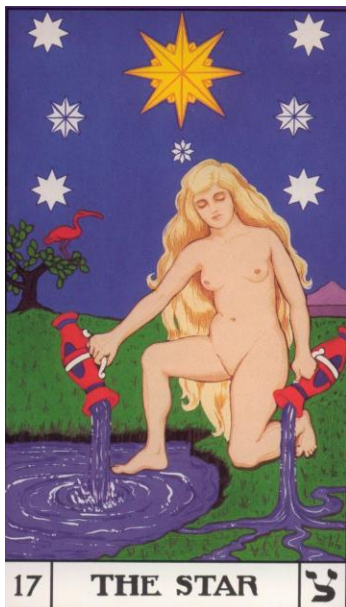
The falling figures represent the chained figures from The Devil card. They fall headfirst because of the sudden influx of spiritual consciousness represented by the lightning flash completely upsets our old notions and the relationship between sub-consciousness and self-consciousness.

The figures wear red and blue to show a mix of subconscious and self-conscious. One figure is crowned to show false knowledge where subconscious motives are permitted to dominate the personality. Thus people excuse themselves by saying "I can't help it".

This domination of personality by emotion and by telepathic invasion through sub-consciousness is overcome by right knowledge. The crown falling from the tower is the materialistic notion that matter and form are the ruling principles of existence. The tower has 22 courses of brick and is made of clay. The 22 courses of brick represents the Hebrew Alphabet (22 letters) and thus speech or language. Clay represents Adam. Thus the tower is a structure of human speech. The tower is on a lonely peak and suggests the fallacy of personal isolation which is the basis of all false philosophy.

There are 22 Hebrew Yods hanging in the air on either side of the building. They represent the Hebrew alphabet. Ten on one side are in the form of the tree of life. The other twelve represent the zodiac. They hang in air to represent that the forces they represent do not rest on any physical foundation.

This picture corresponds to the second stage of spiritual unfoldment wherein a series of sudden, fitful inspirations lead to the perception that the structure of knowledge built on the foundation of the fallacy of personal separateness is false. At this stage, the seeker suffers the destruction of his whole former philosophy.



The Star – Key 17 – Tzaddi -- ז -- Gematria = 90, Final Letter = 900

Tzaddi means fish hook, signifying that which draws the fish (Nun) out of the water (Mem). The water is reflected, personal existence, symbolized by the hanged man. The fish symbolizes transforming and reproductive power. The activity that lifts the fish up out of the material relations of personal existence and utilizes the reproductive forces as a regenerative agent is what is indicated here.

A fish hook is a symbol of angling. It is related to the ideas of experimentation, quest and research. It is a quest for that which is not definitely realized yet, a sort of groping, a feeling of one's way.

Meditation is the function attributed to Tzaddi. It is the fishing for truth in the depths of the subconscious. The Hebrew word literally means conception. It refers to the building or germination of ideas. These are the early stages of mental unfoldment.

Meditation is the only safe regenerative method because it draws nerve force up from the reproductive centers without any actual fixation of attention on the centers themselves.

Natural intelligence is the mode of consciousness attributed to Tzaddi.

Because the number 17 can be reduced to 8, there is a correspondence between this card and Strength. It shows the method whereby knowledge of the Great Secret is attained. This method solves the mysteries of nature and as the picture shows, unveils her to the enlightened seer.

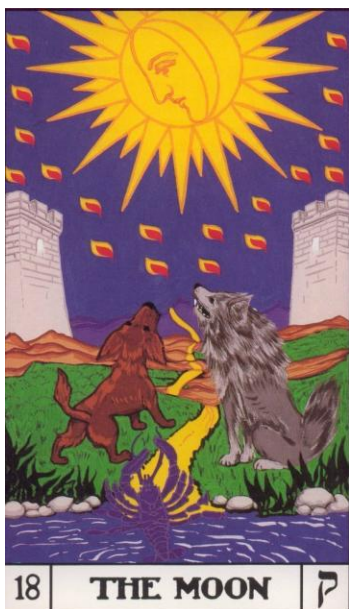
The great yellow star signifies the cosmic radiant energy which is sent forth from the various suns and fixed stars of the universe. It has eight points. It is like the Wheel of Fortune or the symbols on the dress of the Fool. It symbolizes Solar Energy.

The 7 smaller stars represent the interior stars that correspond to the Chakras. The mountain in the background represents the Great Work. The bird on the bush is a scarlet ibis. This is the Egyptian bird sacred to Hermes, the Magician. Its long bill is a natural fish hook. It is perched on a tree which represents the human brain and nervous system. It symbolizes the act of bringing intellectual activity or the thought process to rest by concentration. We have to stop thinking in order to meditate properly and when we stop thinking, truth unveils herself to us.

The woman is Hathor - Mother Nature. She represents both the Empress and the High Priestess. She is also the woman in Strength that tames the Lion.

The pool is universal consciousness which is stirred into vibration by the act of mediation. This is represented by the water flowing into the pool from the right-hand path. The stream flowing from the other pitcher divides into 5 paths. This indicates that meditation also modifies sensation and unfolds higher and subtler types of sense experience.

The earth supports the woman's weight, but she balances herself by water. This shows the third stage of spiritual unfoldment. This is the calm that follows the storm. Thus, "When you have found the beginning of the way, the star of your soul will show its light".



The Moon – Key 18 -- Qoph -- ׀-- Gematria = 100

The bottom of the Qoph is a man calling “Holy”. The top of the Qoph is the Holy one reaching down.

Qoph represents the back of the head. This is the part of the skull which contains the cerebellum and the medulla oblongata. These parts of the brain are related to the functions of human personality which man shares with the rest of the animal kingdom. “Head” moreover means “chief”. Qoph represents what comes before the dominion and ruler-ship of what the word “head” is a symbol. This also represents states of consciousness that are anterior to perfect control.

Sleep is the function assigned to Qoph. Sleep is the period of physiological repair. The word translated “Sleep” is from the Book of Formation. It is spelt SHINH and has the value 365. By transposing letters it may be read HShIN, “the Tooth”. Thus it is a word like the Greek Abraxas, which also adds to 365, and may be a term relating to the number of days and to the number of “eons” ruling the year.

The processes we are now learning about are the direct outcome of the wheels within wheels of the interlocking cycles and rotations of cosmic activities. At the same time, there is a point in human evolution, represented by the Hanged Man, at which we become aware of the fact that personality is only an instrument or channel for the universal forces active in the Great Work.

It is also related to the sign Pisces because that sign governs the feet of man; and because feet are the path makers, Pisces relates to that Way of which the beginning is found when meditation reveals the “star of the soul”.

Corporeal Intelligence means “body consciousness,” that is, the aggregate intelligence of the cells of the body.

The number 18 is 9 by reduction. The Hermit is the goal of the path shown in this picture. With him we are united, according to occult teaching, whenever we experience dreamless sleep. Profound sleep is the state in which personal consciousness is perfectly joined to the real I AM.

The Moon symbolizes the reflected light of sub consciousness. The drops of light falling from it correspond to the implications that “corporeal” is related to “rain”. They are 18 Hebrew Yods, corresponding to the number of the key. The number 18 is the value of the Hebrew noun Chl, signifying “life”. Thus the falling Yods refer to the descent of the life-force from above into the conditions of corporeal existence.

The pool below is the same as that shown in the 14th and 17th keys. It is the “great deep” of cosmic mind-stuff, out of which emerges the “dry land” of physical manifestation. From it all organic life proceeds. The pool also refers to the 9th Sephiroth, Yesod, which is known as the sphere of the moon, and is the seat of the vital Soul, manifested in man as the sub-consciousness.

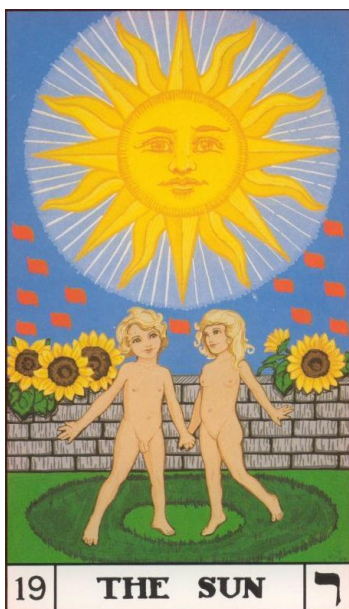
The shell-fish climbing from the pool is a symbol of the early stages of conscious unfoldment.

The path, raising and falling, has been worn by the feet of those who have traveled this way before. It passes between two animals of the same genus, both canine. One, a wolf, remains what nature made him. The other, a dog, is a product of human adaptation. Thus the path passes between the extremes of nature and art.

The path passes from plants & stones, through the canines, and into a cultivated field. This symbolizes matters of general knowledge, until it comes to the two towers, which mark the boundaries of the unknown. Then it continues to the unknown into the planes of consciousness open to us during sleep or trance.

The path rises and falls, suggesting periodicity, wave-motion, vibration. Yet, it continually ascends, so that, as one progresses, the time comes when his most depressed states of consciousness are at a higher level than some of his earlier exaltation.

Key 18 represents the 14th stage of spiritual unfoldment, wherein the knowledge gained by meditation is incorporated into the bodily organism.



The Sun – Key 19 – Resh -- 7 -- Gematria = 200

Resh symbolizes the inescapable wish to believe that you are closer to God than everyone else.

Resh means the head and face of man. In the head are gathered together or collected all the distinctively human powers. The word “countenance” is derived from a Latin verb meaning “to hold together or contain”.

The Sun is the heavenly body corresponding to Resh. It is the power that reaches its highest manifestation in reason, and which always and everywhere is the ruling force which makes effective the law symbolized in Strength.

Fruitfulness and sterility, the pair of opposites attributed to Resh, are the extremes of expression in the manifestation of solar force. The sun causes all growth, but it also makes deserts.

Collective Intelligence is the mode of consciousness. To collect is to assemble, to bring together, to combine, to unify, to embody, to synthesize. The Collective Intelligence concentrates all the modes of consciousness which have gone before and embodies them together in a new form. Thus it is a regenerative mode of consciousness, incorporating all the elements of control in a new realization of personality.

As the number 19 can be reduced to 10 and 10 to 1, this card is logically dependant on the Magician and the Wheel of Fortune. It is the final term of a series of keys self-conscious intelligence.

The title refers to the sun with a human face on the card. It represents truth that the seemingly material forces of nature really are modes of conscious energy. The rays of the sun alternate waves and straight. The wavy rays represent vibration and the straight ones represent radiation.

Four sunflowers, representing the four Kabalistic worlds and the four kingdoms of nature (mineral, vegetable, animal, and human) turn, not toward the sun, but to the littler children. All creatures turn to man for their final development.

The fifth sunflower is a bud turned to the sun. This represents the fifth element or enlightened humanity.

The wall in the background represents human adaptation of natural conditions. It relates to human speech.

Thus Life and the Word (flowers and wall) are shown in the background to indicate the underlying forces at work in what is symbolized by this key. The wall is stone and represents the Hebrew word ABN. This is the union between Father and Sun (Abba and Ben). Human speech is actually the manifestation of this union of the cosmic life force with the central self seated in the hearts of men.⁷

The Wall has five courses symbolizing the five human senses. Words are limited to describing things that we experience with the five senses. Ordinary speech cannot adequately represent spiritual experience and higher levels of consciousness.

The Children are shown with their backs to the wall. This is saying that words are not enough and that words cannot express the highest forms of realization.

Both children are nude, to show their state of innocence, comparable to the Lovers in Key 6. They are not quite adolescent, to indicate that this stage of unfoldment, is not the full unfoldment of the powers of the 5th kingdom. The children represent consciousness and sub-consciousness and they are dancing in a fairy ring. Their hands are clasped, to suggest the perfect union of the two modes of consciousness. Each has one foot planted firmly in the central circle of the ring, so that the other foot is free to swing.

It is a grade of conscious self-identification with the One Life Power. Yet it is not final. The physical forces are under the control of the adept – “A little child shall lead them”. Yet a person of this level still feels himself to be a separate and distinct entity. It is not full liberation, but a higher level than the ones before it.



Judgment – Key 20 – Shin -- ♃ -- Gematria = 300

Shin means tooth, probably a serpent's fang. It suggests sharpness, acidity, and active manifestation. The gematria of 300 is the same as Ruach Elohim, which means the holy life breath or Holy Spirit.

This letter is a symbol of the power which tears down the limitations of form as teeth break up food. It represents the power that "kills" the false personality and its sense of separateness.

Fire is the element attributed to Shin. It is the particular quality of the solar force and of the Mars vibration. It is also the quality of the zodiac signs represented in Tarot by the Emperor, Strength, and Temperance. Its color is scarlet.

Perpetual Intelligence is the mode of consciousness. Its name is derived from a Hebrew root meaning "to stretch". This implies that the perpetual intelligence is an extension beyond the limits of the modes of consciousness common to most human beings. This implies conscious immortality.

The number 20 reduces to 2 and we understand that the consciousness here represented is the culmination of mental activities originating in the cosmic memory.

This key implies completion, decision, termination. It is the final state of personal consciousness.

The figures in the picture are a man, a woman, and a child. Their bodies are tinted gray, rather than flesh-color, to intimate that in this phase of personal consciousness the "pairs of opposites" have been neutralized, as complementary colors are neutralized in gray and that the scene depicted is not located in the physical plane.

The man is self-consciousness, the woman is sub-consciousness, and the child is regenerated personality. The position of their arms represents LVX which means light.

The angel is the Divine Breath or cosmic fire and he is the angel Gabriel (because he carries a trumpet and because Gabriel is the angel of water which is indicated by his blue robe).

The action of heat upon water creates air, the substance of breath. Seven basic tones are indicated by 7 lines radiating from the bell of the trumpet. These seven tones are those which affect the seven interior stars by sympathetic vibration. The arms of the cross will include 9 out of the 25 square units on the face of the banner. 9 is the number of completion and 5 is the number of adaption.

The coffins float upon a sea which is the final reservoir of those waters which begin in the robe of the High Priestess. The coffins are rectangular, to represent the three dimensions of the physical plane. The 3 human figures are at right angles to the coffins to represent the fourth dimension.

Snowy mountains in the background represent the heights of abstract thought. This takes purely mathematical form. Thus the symbolism suggests what is shown on the card, is derived from mathematical considerations.

The child's back is toward us, because he represents return to the Source of all. This card shows the sixth stage of spiritual unfoldment in which personal consciousness is on the verge of blending with the universal. At this stage, the adept realizes that his personal existence is nothing but the manifestation of the relationship between self-consciousness and sub-consciousness. These are merely modes of universal consciousness. Thus he knows that his personality has no separate existence. At this stage his intellectual conviction is confirmed by 4th dimensional experiences which blot out the delusion of separateness forever.



The World – Key 21 -- Tav -- ת -- Gematria = 400

Tav means signature or mark. The mark is a cross of equal arms, like that on the breast of the high priestess. This letter is Tau in the Greek alphabet and the Egyptian Tau-cross is said to have been a tally for measuring the depth of the Nile. Among the Hebrews it was a symbol of salvation. Thus it represents salvation from death and eternal life.

A signature is what makes business instruments valid. The letter Tav therefore indicates the final seal and witness to the completion of the Great Work of liberation.

Center or “the palace of holiness” is the direction attributed to Tav. This palace of holiness is said to “sustain all things”. In Kabbalah it is said to be Jerusalem or Zion where man can commune with God.

The Hebrew word for palace is Haikal. Its gematria is 65 which is also the number of Adonai (Lord).

Dominion and Slavery is the pair of opposites attributed to Tav. Right interpretation of the necessity for limitation in any form of manifested existence is the secret of dominion. Wrong interpretation of the same thing is the cause of our slavery to conditions. The clue to the right understanding is “He who would rule nature must first obey her laws”.

Administrative Intelligence is the mode of consciousness attributed to Tav. This is consciousness of active participation in the cosmic government. It is entry into the kingdom of heaven as a fully enfranchised citizen, charged with full responsibility for the execution of its laws.

The number 21 is connected with 12 and 3. It is also the sum of the numbers from 0 to 6.

The World is the common title, but sometimes the Key is named “The Universe” to indicate that the consciousness it represents is not merely terrestrial, but truly cosmic.

The four animals at the corners of the design have been explained in connection with the tenth key of the tarot.

The ellipse is formed of 22 groups of 3 leaves, eleven groups on either side. These represent the 22 forces corresponding to the letters of the Hebrew Alphabet. There are 3 leaves in each group, because each one of the 22 forces has 3 modes of expression. They can represent in integration, disintegration or in equilibrium.

The horizontal 8 shaped bindings at the top and bottom of the wreath are like those in the magician and strength. They have the same meaning. Here they are red because they have been carried into action.

Their position is to symbolize “As above, so below”.

The dancer represents the merging of self-consciousness with sub-consciousness and the binding of these 2 with super-consciousness. The violet scarf conceals the fact that the figure is androgynous. In this form of consciousness, all sense of separate sex is lost with the extinction of all sense of separate personality. This is the all-father and all-mother. She is the Kingdom and the King.

She bears two wands. The one in the right turns clock-wise and the left turns counter-clock-wise. The wands represent the spiral force of the Life-power: Involution and evolution.

This signifies Cosmic Consciousness or Nirvana. The central fact of this experience is that he to whom it comes has firsthand knowledge that he is in perfection union with the One Power. He knows also that through him the governing and directing power of the universe flows out into manifestation.